



Award winning recruitment firm SkyBlue has successfully contributed to another Carillion venture supplying a continuous stream of labour from the initial building stage of the project to the National Support Centre that currently operates from the 'The Square' today.

The success of this venture is attributed to SkyBlue fulfilling all labour requirements proficiently, ensuring workers received on-going support throughout the recruitment process all in line with Carillion's business needs.

Offering an end to end recruitment process by embedding the Carillion recruitment strategy. Recruitment for 'The Square' began with SkyBlue supplying both temporary and temporary-to-permanent labour in 2008 for Carillion's various business needs ranging from administration workers, front of house staff, and

Case Study

most predominantly a large number of help desk operators for all business units involved; Estates Team, Finance Shared Service, Bid Management Team, and the Facilities Management Team.

Three years on, SkyBlue continue to liaise with Carillion's own hiring team supplying labour for new and on-going work ensuring all Carillion needs are still being met.

Christian McCartan, Training and Recruitment Officer, Carillion Facilities Management, explains how seamless the whole process has been, "SkyBlue assisted us in numerous rounds of recruitment providing candidates, helping organise assessment centres and ensuring all relevant paperwork was completed on time ensuring new starters began working with us when we need them most. The service helped us to ensure that we had the right staff to provide the exceptional standards of customer service our clients have come to expect. The fact that SkyBlue are able to understand and react to our timescales allows us to be very flexible".

Delivering exceptional customer service ensuring a long-term relationship. SkyBlue has provided a high level of support ensuring a strong relationship remains between themselves and their workers throughout the various stages of this project and in effect meeting the needs of the client. “Assistance and support has been offered to me at all times, the contact I received from SkyBlue was excellent. I was always kept up-to-date on everything, Mike Gill, SkyBlue Leeds Team Leader was always available and made an effort to speak to us all when on site”, explains Mike Pratt, Helpdesk Operator, Carillion Facilities Management.

As a recruitment partner SkyBlue are ‘fit for Carillion’s future’. SkyBlue has delivered in a way that has supported Carillion’s ‘Fit for the Future’ and ‘Step-up’ campaigns by becoming fully immersed within the project ensuring Carillion’s business needs have been fully identified and adhered to throughout the various recruitment stages.

“SkyBlue has been involved with ‘The Square’ since day one supplying all recruitment needs. I feel it is an example of our true capacity to work alongside any Carillion business unit to contribute to their continuous success, as well as reiterating their corporate messages.

Our work within The Square is on-going and with the recent relocations, we are keen to learn of further opportunities and increase our knowledge and add further benefit to each business unit and Carillion as a whole”, SkyBlue Leeds Team Leader Mike Gill.

SkyBlue delivers local knowledge and nationwide solutions, through our network of regional branches in Birmingham, Bath, Cardiff, Doncaster, Gateshead, Warrington, Leeds, London, Nottingham, Southampton, and Glasgow.

Each office is staffed by specialist recruitment personnel who are all professionally trained and qualified through the Recruitment & Employment Confederation (REC).

For more details on SkyBlue’s full range of services contact:

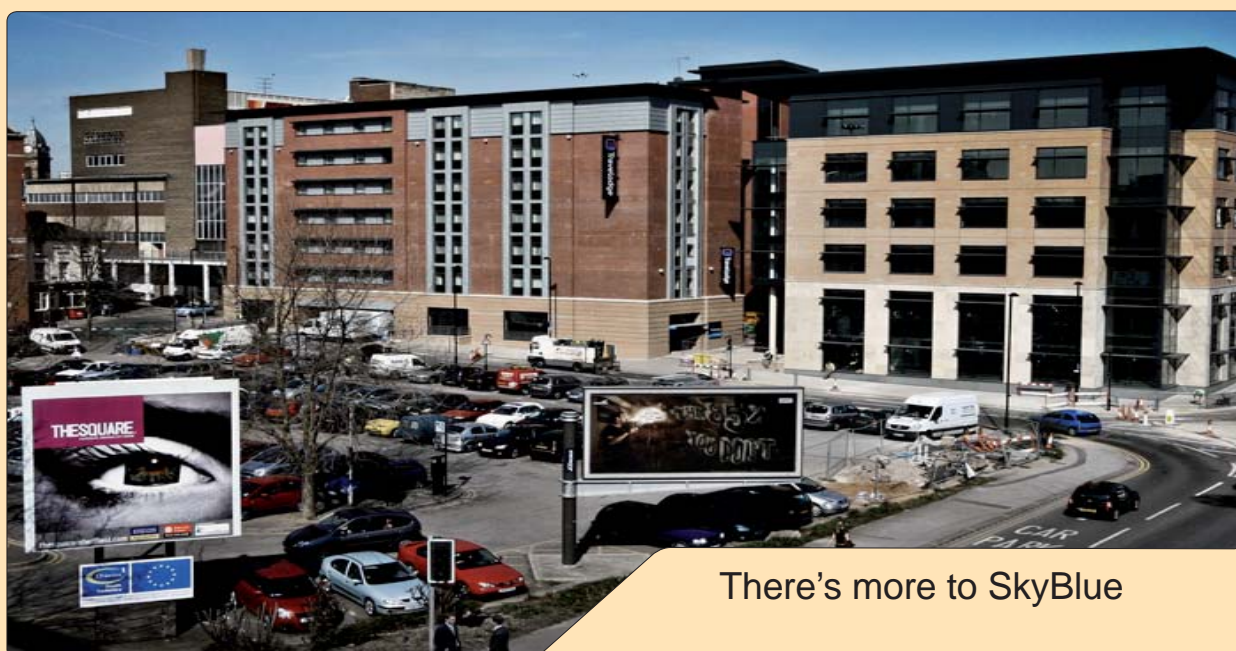
T: 0845 111 4334

F: 0870 129 3786

ask@skybluesolutions.com

www.skybluesolutions.com

SkyBlue provides temporary and permanent labour for clients in Construction, Rail, Civil Engineering, Highways, Utilities, Business Services, Facilities Management and Mechanical & Electrical Engineering.



There's more to SkyBlue